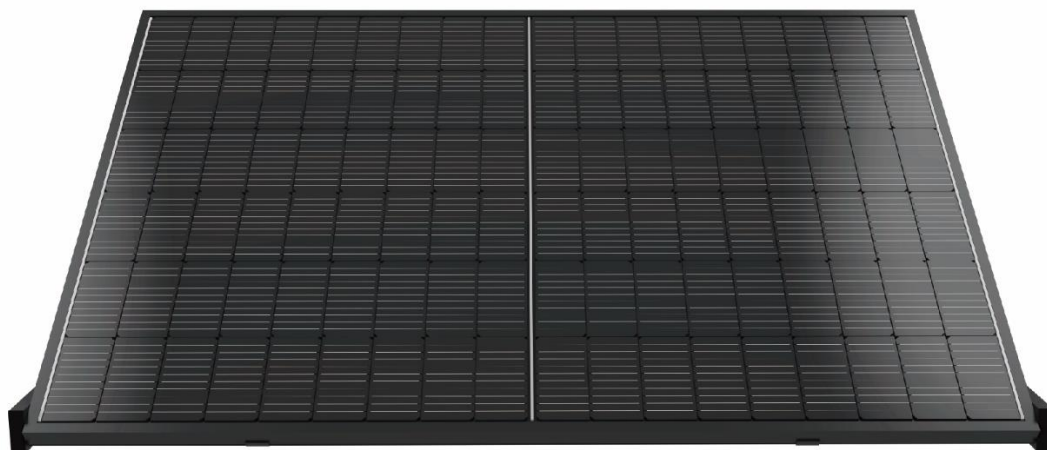


Mobile PV System-MPV



We offer a customizable mobile PV mounting kit for system integrators. It can be easily integrated with PV module, micro-inverter, and battery to create a mobile PV system. The integrated system is shipped pre-assembled and folded, ready for use with minimal setup. The module angle can also be set to either fixed or continuous angles. The system has a small and safe package. Two vertical beams can secure the PV module during transit. The integrated PV system can be deployed horizontally on the ground, such as in gardens, flat rooftops, or campgrounds. It can also be hung vertically on a wall.



Specifications

Wind Load:30m/s

Warranty:10 years

Material:AL6005-T5/SUS304/Q355

Module:Framed

Building height:10m

Tilt Angle:0°/15°~25°/25°~35°(Customizable)

Standard:GB 50009 | EN1991 | AS/NZS1170 | JIS C8955 | ASCE7

Module Orientation:Landscape